

VariTUL - The new mobility in the production area



- Robust construction
- Variable assembly options
- Versatile application
- Functional
- Manoeuvrable
- Low investment costs
- Aesthetically pleasing



VariTUL - Modular and easy to interlock

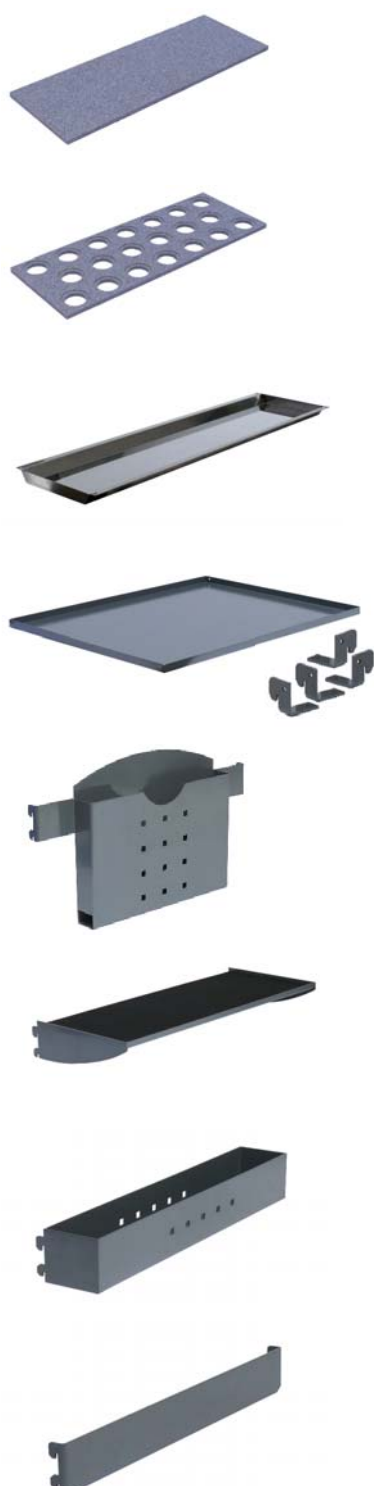


Colour: RAL 7011 iron grey



	Model VTH5	Model VTH7
Side element with swivel castor and locking castor	w x h = 520 x 880 mm Ref.no. 130.501	
Side element with fixed castors	w x h = 520 x 880 mm Ref.no. 130.502	
Push handle Colour: RAL 3020 traffic red	l x w x h = 500 x 90 x 100 mm Ref.no. 130.520	
Insert frame	l x w x h = 670 x 500 x 65 mm (for 10 TUL carriers) Ref.no. 130.510	l x w x h = 910 x 500 x 65 mm (for 14 TUL carriers) Ref.no. 130.511
Complete set	Set 1: 1 side element with swivel castor and locking castor 1 side element with fixed castors 2 insert frames 1 push handle l x w x h = 780 x 520 x 900 mm Loading capacity 250 kp Weight 23 kg Ref.no. 129.510	Set 2: 1 side element with swivel castor and locking castor 1 side element with fixed castors 2 insert frames 1 push handle l x w x h = 1010 x 520 x 900 mm Loading capacity 250 kp Weight 34 kg Ref.no. 129.511
Side element with swivel castor and locking castor for high level trolleys	w x h = 520 x 1800 mm Ref.no. 130.505	
Side element with fixed castors for high level trolleys	w x h = 520 x 1800 mm Ref.no. 130.506	

with many useful details



	Model VTH5	Model VTH7
Insertable shelf	I x w x h = 620 x 240 x 15 mm Ref.no. 130.530	I x w x h = 860 x 240 x 15 mm Ref.no. 130.531
Insertable shelf with punched-out hole grid	I x w x h = 620 x 240 x 15 mm for ISO 40, HSK 63, PSK 63 (C6) capacity: 20 tools Ref.no. 130.535	I x w x h = 860 x 240 x 15 mm for ISO 40, HSK 63, PSK 63 (C6) capacity: 29 tools Ref.no. 130.536
Insertable tray made of V2A steel	I x w x h = 620 x 240 x 50 mm Ref.no. 130.540	I x w x h = 860 x 240 x 50 mm Ref.no. 130.541
Steel tray incl. support brackets	I x w x h = 630 x 490 x 20 mm Ref.no. 130.545	I x w x h = 870 x 490 x 20 mm Ref.no. 130.546
Document pocket for format 325 x 220 mm	I x w x h = 495 x 60 x 276 mm Ref.no. 130.521	
Deposit panel with corrugated rubber	I x w x h = 495 x 215 x 74 mm Ref.no. 130.522	
Utensils box	I x w x h = 495 x 95 x 80 mm Ref.no. 130.523	
Universal adapter	I x w x h = 495 x 20 x 65 mm Ref.no. 130.524	



KELCH

VariTUL - Customisable transportation solutions

The basic trolley framework consists of two side elements, two insert frames and a push handle that are quickly interlocked to form a robust structure. The practical design allows the trolley to be arranged to suit your specific transportation task. With VariTUL you can now create your own trolley. There are several possibilities for combining the individual elements for the transportation of your work pieces or tools, measuring equipment or fixtures, auxiliaries or any other goods. Practical accessory additions can be attached to the side elements to enhance the versatility of the trolley. There are variable height options through adjustable platform levels to provide a comfortable working posture. VariTUL - will enhance any production area.

VariTUL - Variable solutions for flexible transport and storage



Our well-proven TUL carriers can also be inserted for safe transportation of tools.



Document pocket



Deposit panel



Utensils box



High level trolleys with adjustable insert frame positions and interlock push handles for ergonomic working.

050209/2 - Technical and design modifications are subject to change without notice.