

i-tec[®] SLOTT



The only universal shank shrinker

increasing the range of shrink applications up to h9

i-tec®SLOTT - More Tolerance when Shrinking

► The requirement

Process-sure clamping technology of straight shank tools currently require a tolerance of h6. This can be restrictive reducing the advantages of the modern shrinking technology.

► The solution

The shrink fit chuck is slotted. Thus a shank with a larger tolerance range can be inserted. For clamping a sleeve is heated and is placed over the shrink fit in an expanded condition.

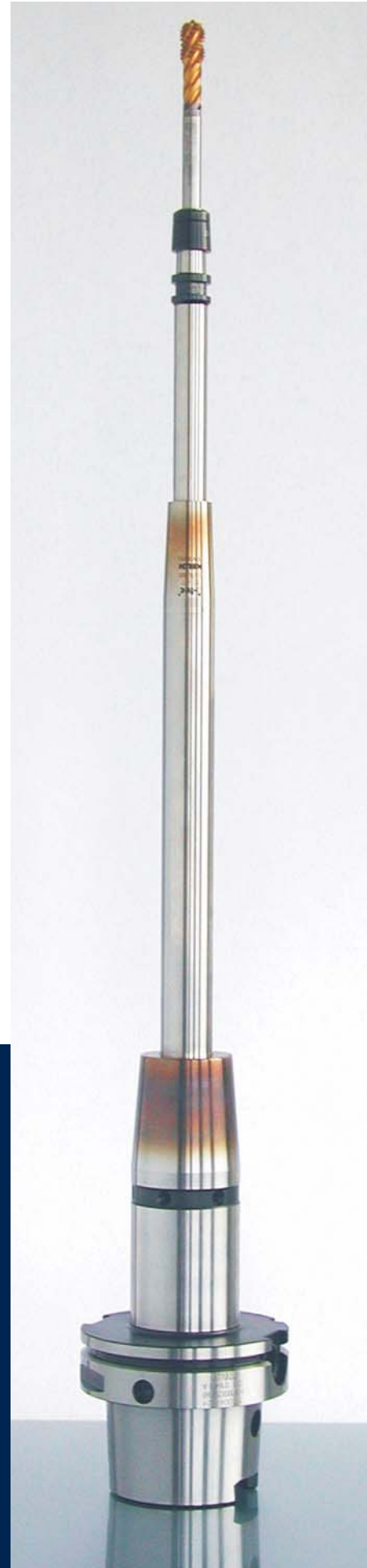
► The result

After having cooled down the sleeve, a stable centric clamping force develops, which has many advantages:

- High stiffness
- Excellent concentricity
- Process-sure clamping
- Use of all straight shanks up to a shaft tolerance of h9
- Different tool shank materials can be successfully clamped and removed, including HSS, steel or ceramics.



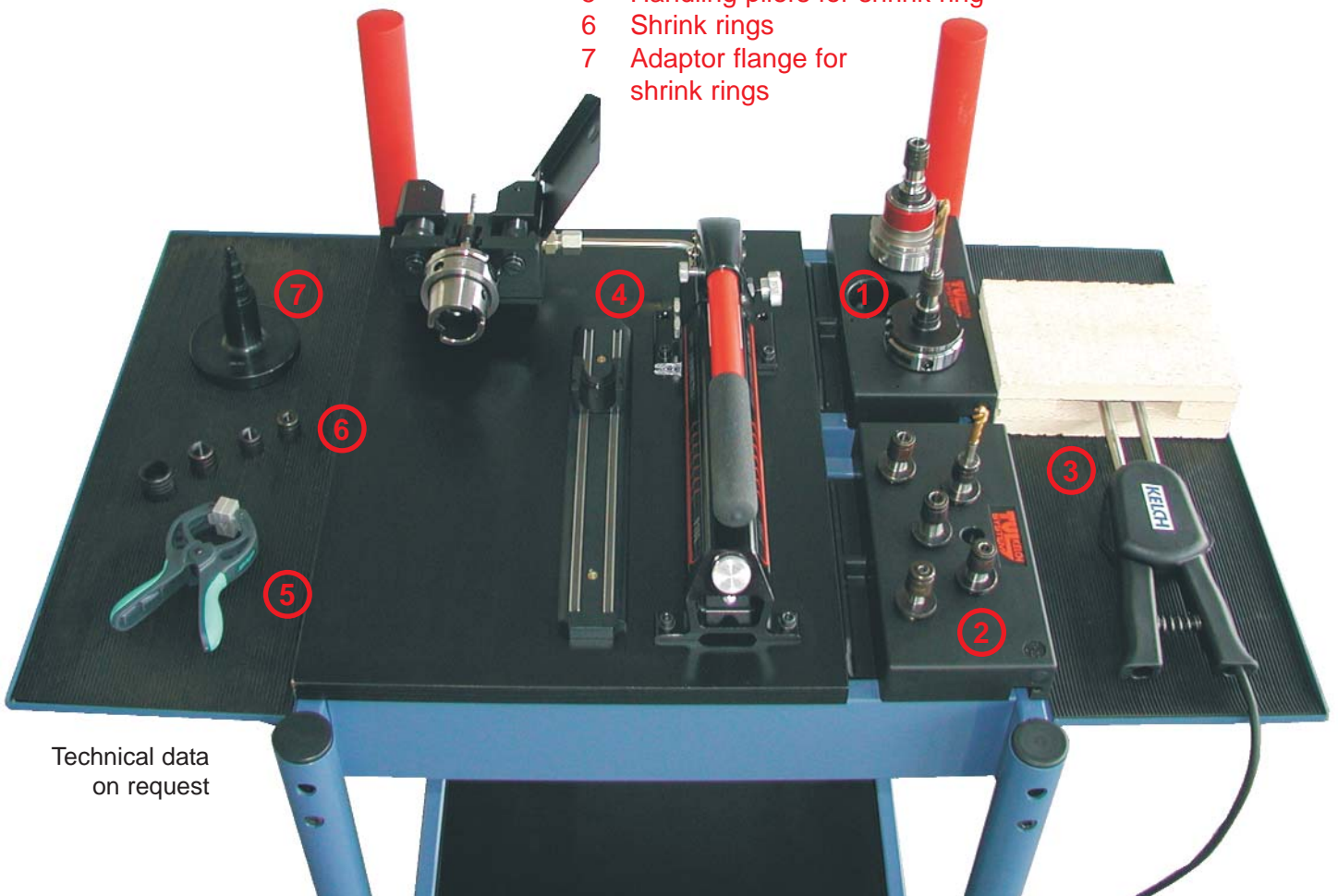
slotted chuck
+ shrunk on ring
= perfect fit



i-tec®SLOTT-MOBIL

Everything for “slotting” easy at hand and ready for use everywhere

- 1 Tool holders
- 2 Quick change inserts
- 3 i-tec®Hot-SLOTT
- 4 Hydraulic pull-off fixture
- 5 Handling pliers for shrink ring
- 6 Shrink rings
- 7 Adaptor flange for shrink rings



Technical data
on request

Thermal clamping



Place the shrink ring on the adaptor flange



Place the adaptor flange with the shrink ring under the inductor



Heat the shrink ring (2.3 sec.)

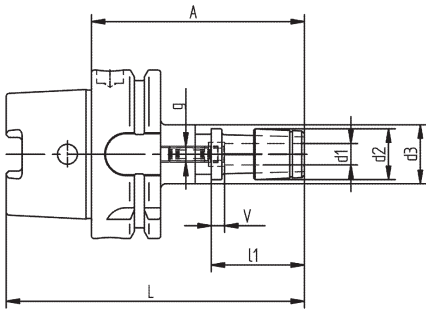


Using the handling pliers, slide the shrink ring over the tool holder

i-tec®SLOTT HSK-A 63 - ISO 12164-1

i-tec®SLOTT ISO 40 DIN 69 871 Form AD/B

Tool Holders HSK A 63



HSK-A x d1 x A	Ref.no.	d 2	d 3	l 1	g	L	V	Weight kg	Stop screw	Shrink ring
63 x 3 x 80	285.0000.322	19	22	-	-	112	-	0.7	-	285.901
63 x 4 x 80	285.0002.322	19	22	-	-	112	-	0.7	-	285.901
63 x 5 x 80	285.0003.322	19	22	-	-	112	-	0.7	-	285.901
63 x 6 x 80	285.0004.322	19	22	35	M 6	112	5	0.7	159.385	285.902
63 x 6 x 100	285.0034.322	19	22	35	M 6	132	5	0.7	159.385	285.902
63 x 7 x 80	285.0005.322	19	22	35	M 6	112	5	0.7	159.385	285.902
63 x 7 x 100	285.0035.322	19	22	35	M 6	132	5	0.8	159.385	285.902
63 x 8 x 80	285.0006.322	19	22	35	M 6	112	5	0.7	159.385	285.902
63 x 8 x 100	285.0036.322	19	22	35	M 6	132	5	0.8	159.385	285.902
63 x 9 x 80	285.0007.322	19	22	37	M 6	112	5	0.7	159.385	285.902
63 x 9 x 100	285.0037.322	19	22	37	M 6	132	5	0.8	159.385	285.902
63 x 10 x 80	285.0008.322	22	22	37	M 6	112	5	0.7	159.385	285.903
63 x 10 x 100	285.0038.322	22	22	37	M 6	132	5	0.8	159.385	285.903
63 x 11 x 100	285.0009.322	22	22	37	M 6	132	5	0.8	159.385	285.903
63 x 12 x 100	285.0010.322	27	22	37	M 6	132	5	0.8	159.385	285.904
63 x 16 x 100	285.0012.322	27	30	40	M 6	132	5	0.9	159.385	285.904

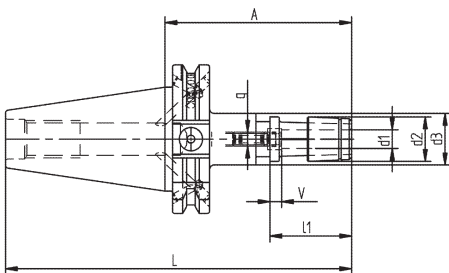
Design

Hollow-shank taper according to ISO 12164-1, form A.
The clamping diameter is designed for a shank tolerance of h9.

Standard specification

With bored-through stop screw for length adjustment (from \varnothing 6) and shrink ring.
Other styles and sizes available on request.

Tool holders ISO 40



ISO x d1 x A	Ref.no.	d 2	d 3	l 1	g	L	V	Weight kg	Stop screw	Shrink ring
40 x 3 x 80	285.0000.292	19	22	-	-	149	-	0.8	-	285.901
40 x 4 x 80	285.0002.292	19	22	-	-	149	-	0.8	-	285.901
40 x 5 x 80	285.0003.292	19	22	-	-	149	-	0.8	-	285.901
40 x 6 x 80	285.0004.292	19	22	35	M 6	149	5	0.9	159.385	285.902
40 x 7 x 80	285.0005.292	19	22	35	M 6	149	5	0.9	159.385	285.902
40 x 8 x 80	285.0006.292	19	22	35	M 6	149	5	0.9	159.385	285.902
40 x 9 x 80	285.0007.292	19	22	37	M 6	149	5	0.9	159.385	285.902
40 x 10 x 80	285.0008.292	22	22	37	M 6	149	5	1.0	159.385	285.903
40 x 11 x 80	285.0009.292	22	22	37	M 6	149	5	1.0	159.385	285.903
40 x 12 x 80	285.0010.292	27	22	37	M 6	149	5	1.0	159.385	285.904
40 x 16 x 80	285.0012.292	27	30	40	M 6	149	5	1.1	159.385	285.904

Design

Step taper according to DIN 69 871-1, form AD/B.
The clamping diameter is designed for a shank tolerance of h9.

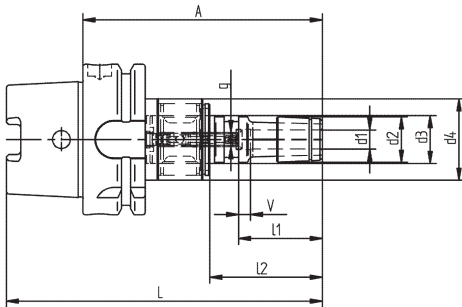
Standard specification

With bored-through stop screw for length adjustment (from \varnothing 6) and shrink ring.
Other styles and sizes available on request.

Note

Coolant bores for form B are closed with threaded pins on delivery. If required unscrew the threaded pins.

SLOTT Synchro with HSK A 63



HSK-A x d1 x A	Ref.no.	d 2	d 3	d 4	l 1	l 2	g	L	V	kg	Stop screw	Shrink ring
63 x 3.0 x 100	285.0200.322	19	20	34	-	47	-	132	-	0.9	-	285.901
63 x 3.5 x 100	285.0201.322	19	20	34	-	47	-	132	-	0.9	-	285.901
63 x 4.0 x 100	285.0202.322	19	20	34	-	47	-	132	-	0.9	-	285.901
63 x 4.5 x 100	285.0203.322	19	20	34	-	47	-	132	-	0.9	-	285.901
63 x 5.0 x 100	285.0204.322	19	20	34	-	47	-	132	-	0.9	-	285.901
63 x 6.0 x 100	285.0205.322	19	20	34	35	47	M 5	132	5	0.9	159.550	285.902
63 x 7.0 x 100	285.0206.322	19	20	34	35	47	M 5	132	5	0.9	159.550	285.902
63 x 8.0 x 100	285.0207.322	19	20	34	35	47	M 6	132	5	0.9	159.551	285.902
63 x 9.0 x 100	285.0208.322	19	20	34	37	47	M 6	132	5	0.9	159.551	285.902
63 x 10.0 x 110	285.0220.322	22	30	45	37	52	M 8x1	142	5	1.1	159.553	285.903
63 x 11.0 x 110	285.0221.322	22	30	45	37	52	M 8x1	142	5	1.1	159.553	285.903
63 x 12.0 x 115	285.0222.322	27	30	45	37	57	M 10x1	147	5	1.2	159.555	285.904
63 x 14.0 x 115	285.0223.322	27	30	45	40	57	M 10x1	147	5	1.2	159.555	285.904
63 x 16.0 x 115	285.0224.322	27	30	45	40	57	M 12x1	147	5	1.2	159.556	285.904

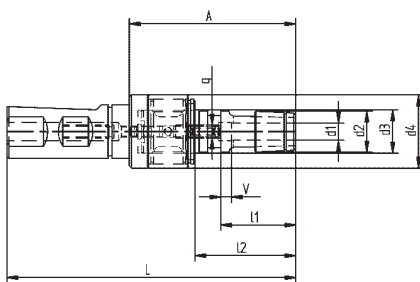
Design

Hollow-shank taper according to ISO 12164-1, form A.
The clamping diameter is designed for a shank tolerance of h9.

Standard specification

With bored-through stop screw for length adjustment (from ø 6) and shrink ring.
Other styles and sizes available on request.

SLOTT Synchro with straight shank



ø x d1 x A	Ref.no.	d 2	d 3	d 4	l 1	l 2	g	L	V	kg	Stop screw	Shrink ring
25 x 3.0 x 77.5	285.200	19	20	34	-	47	-	134.5	-	0.5	-	285.901
25 x 3.5 x 77.5	285.201	19	20	34	-	47	-	134.5	-	0.5	-	285.901
25 x 4.0 x 77.5	285.202	19	20	34	-	47	-	134.5	-	0.5	-	285.901
25 x 4.5 x 77.5	285.203	19	20	34	-	47	-	134.5	-	0.5	-	285.901
25 x 5.0 x 77.5	285.204	19	20	34	-	47	-	134.5	-	0.5	-	285.901
25 x 6.0 x 77.5	285.205	19	20	34	35	47	M 5	134.5	5	0.5	159.550	285.902
25 x 7.0 x 77.5	285.206	19	20	34	35	47	M 5	134.5	5	0.5	159.550	285.902
25 x 8.0 x 77.5	285.207	19	20	34	35	47	M 6	134.5	5	0.5	159.551	285.902
25 x 9.0 x 77.5	285.208	19	20	34	37	47	M 6	134.5	5	0.5	159.551	285.902
25 x 10.0 x 88.5	285.220	22	30	45	37	52	M 8x1	145.5	5	0.7	159.553	285.903
25 x 11.0 x 88.5	285.221	22	30	45	37	52	M 8x1	145.5	5	0.7	159.553	285.903
25 x 12.0 x 93.5	285.222	27	30	45	37	57	M 10x1	150.5	5	0.8	159.555	285.904
25 x 14.0 x 93.5	285.223	27	30	45	40	57	M 10x1	150.5	5	0.8	159.555	285.904
25 x 16.0 x 93.5	285.224	27	30	45	40	57	M 12x1	150.5	5	0.8	159.556	285.904

Design

Straight shank ASME B 94.19
The clamping diameter is designed for a shank tolerance of h9.

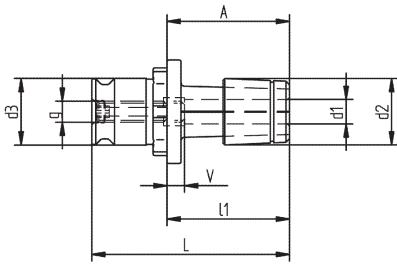
Standard specification

With bored-through stop screw for length adjustment (from ø 6) and shrink ring.
Other styles and sizes available on request.

i-tec®SLOTT Size KA and KB

i-tec®SLOTT Extensions

Quick change inserts size KA



Size x d1 x A	Ref.no.	d 2	d 3	l 1	g	L	V	Weight kg	Stop screw	Shrink ring
KA x 3.5 x 35	285.001	19	19	30	M 6	56.5	5	0.1	159.366	285.901
KA x 4.0 x 35	285.002	19	19	30	M 6	56.5		0.1	159.366	285.901
KA x 4.5 x 35	285.003	19	19	30	M 6	56.5		0.1	159.366	285.901
KA x 6.0 x 35	285.004	19	19	35	M 6	56.5		0.1	159.366	285.902
KA x 7.0 x 35	285.005	19	19	35	M 6	56.5		0.1	159.366	285.902
KA x 8.0 x 35	285.006	19	19	35	M 6	56.5		0.1	159.366	285.902
KA x 9.0 x 40	285.007	19	19	37	M 6	61.5		0.1	159.366	285.902
KA x 10.0 x 40	285.008	22	19	37	M 6	61.5		0.1	159.366	285.903

Use

Quick change inserts to be used in quick change tapping chucks.

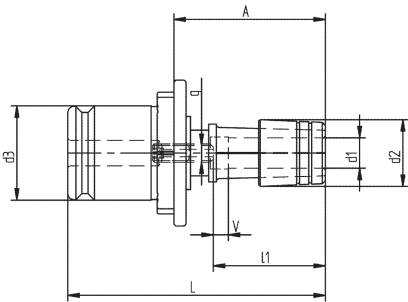
Design

Quick change inserts size KA according to DIN 6393-19. The clamping diameter is designed for a shank tolerance of h9.

Standard specification

With bored-through stop screw for length adjustment and shrink ring. Other styles and sizes available on request.

Quick change inserts size KB



Size x d1 x A	Ref.no.	d 2	d 3	l 1	g	L	V	Weight kg	Stop screw	Shrink ring
KB x 10 x 50	285.108	22	31	37	M 6	85	5	0.3	159.366	285.903
KB x 11 x 50	285.109	22	31	37	M 6	85		0.3	159.366	285.903
KB x 12 x 50	285.110	27	31	37	M 6	85		0.3	159.366	285.904
KB x 14 x 55	285.111	27	31	40	M 6	90		0.4	159.366	285.904
KB x 16 x 55	285.112	27	31	40	M 6	90		0.4	159.366	285.904

Use

Quick change inserts to be used in quick change tapping chucks.

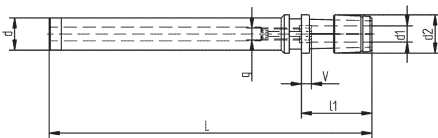
Design

Quick change inserts size KB according to DIN 6393-31. The clamping diameter is designed for a shank tolerance of h9.

Standard specification

With bored-through stop screw for length adjustment and shrink ring. Other styles and sizes available on request.

Extensions



d x d1 x L	Ref.no.	d 2	l 1	g	V	Weight kg	Stop screw	Shrink ring
16 x 3.5 x 160	285.801	19	30	-	-	0.2	-	285.901
16 x 4.0 x 160	285.802	19	30	-	-	0.2	-	285.901
16 x 4.5 x 160	285.803	19	30	-	-	0.2	-	285.901
16 x 6.0 x 160	285.804	19	35	M 5	5	0.3	159.365	285.902
16 x 7.0 x 160	285.805	19	35	M 6	5	0.3	159.366	285.902
16 x 8.0 x 160	285.806	19	35	M 6	5	0.3	159.366	285.902
16 x 9.0 x 160	285.807	19	37	M 6	5	0.3	159.366	285.902
16 x 10.0 x 160	285.808	22	37	M 6	5	0.3	159.366	285.903
16 x 12.0 x 160	285.810	27	37	M 6	5	0.3	159.366	285.904

Design

i-tec®SLOTT Extensions. The clamping diameter is designed for a shank tolerance of h9.

Standard specification

With bored-through stop screw for length adjustment (from ø 6) and shrink ring.

Note

Straight shank according to DIN 1835 form A.

Holding sleeve for i-tec®L



Use
To hold different adaptor flanges.

Holding sleeve	Ref.no.
For i-tec® L device	313.741

Adaptor flange for i-tec®SLOTT shrink rings



Use
To hold the shrink rings during heating.

Adaptor flange	Ref.no.
For shrink rings	286.720

Handling pliers for shrink ring



Use
To handle the hot shrink ring.

Handling pliers	Ref.no.
For shrink rings	286.901

i-tec®Hot-SLOTT



Use
Simple contact heater for the i-tec®SLOTT shrink ring.

i-tec®Hot-SLOTT	Ref.no.
For shrink rings	286.501

Hydraulic pull-off fixture



Use
To release the clamped shrink ring. For all i-tec®SLOTT chucks as well as quick change inserts and extensions.

Hydr. pull-off fixture	Ref.no.
For \varnothing 3 -16	286.101

Standard specification
Including hydraulic pump.



Shrink ring clamped



Shrink ring released

Various fields of application as well as superior advantages

i-tec®SLOTT chucks

- ▶ are slimmer than collet chucks with clamping nut and thus have a **better accessibility**.
- ▶ have a higher concentricity tolerance than collet chucks, Weldon chucks or drill chucks and provide **better surface finish** and a **longer tool life**.
- ▶ are more stable than small collet chucks as e.g. ER 11 or ER 16 and **simplify the handling** for the user.
- ▶ are stiffer than quick change inserts and provide **better stability, less wear** and **higher process reliability**.



Technical and design modifications are subject to change without notice. All measurements in mm.

Germany:

Kelch & Links GmbH
Wiesenstraße 64
D-73614 Schorndorf
Phone (+49) 7181 925-0
Fax (+49) 7181 925-200
info@kelch.de
www.kelch.de

England:

KELCH UK Ltd.
14 Tall Trees Close
Northampton NN4 9XZ
Phone (+44) 1604 66-0078
Fax (+44) 1604 66-1599
info@kelch.co.uk
www.kelch.de

China:

KELCH (SHANGHAI) Co., Ltd.
Suite 1B, No. 88 Taigu Road
Waigaoqiao FTZ, Shanghai
Phone (+86) 21 62 84 21 68
Fax (+86) 21 52 84 05 85
www.kelch.de

Switzerland:

KELCH AG
Weihermattstraße 14
CH-6260 Reiden
Phone (+41) 62 75851-26
Fax (+41) 62 75851-25
kelch@bluewin.ch
www.kelch.de

France:

Kelch & Links GmbH
Office France
50, Avenue d'Alsace
F-68027 COLMAR Cedex
Phone (+33) 03 89 20 69 97
Fax (+33) 03 89 20 43 79
info@kelch.de
www.kelch.de

USA:

KELCH Inc.
362 Lexington Drive
Buffalo Grove IL 60089
Phone (001) 847 459-9600
Fax (001) 847 459-9629
info@kelchusa.com
www.kelch.de